



muveeNow

User Guide

CONTENT

CHAPTER 1

Getting Started

	Page
Introduction	3
System Requirements	3
Supported input formats	4
Supported saving formats	4
Installation	5
The interface	6/7

CHAPTER 2

Using muveeNow

Step 1:	Adding videos and pictures	8
Step 2:	Adding music	9
	Selecting style	9
	Setting muvee duration	10
	Adding Title/Credits	10
	Audio mixer options	10
	Making muvee	11
Step 3:	Saving with muveeShare	12

Introduction

muveeNow is a software companion for your digital camera. In a few simple steps, muveeNow lets you turn your photos and video clips into great-looking montages or music videos (called muvees) that you can save or burn to DVD and share. It features a wizard-guided interface that introduces muvee-making in just 3 easy steps.

System Requirements

Processor: Intel Pentium III 1 GHz, AMD Athlon, or equivalent with MMX support

Memory: 256MB RAM

Video Memory: 16MB RAM & above

Operating System: Microsoft Windows 2000, XP and Vista

Other Requirements: Microsoft DirectX 9.0 or higher, Apple QuickTime (for MOV files)

Supported input formats

Video formats

- AVI (DV)
- WMV
- MPEG1
- MPEG2
- MP4
- DivX
- *MOV (QuickTime)
- 3GP
- ASF

Picture formats

- JPEG
- BMP
- GIF
- TIF
- PNG

Music formats

- MP3
- WAV
- WMA (DRM, limited play not supported)
- M4A (Unprotected AAC)

* Note: Apple QuickTime is required to support MOV files.

Supported saving formats

- WMV
- *MOV (QuickTime)
- MPEG-1
- AVI
- 3GP

* Note: Apple QuickTime is required to support MOV files.

Installation

To install:

1. Click on muveeNow's installer, **mNow_xxx.exe** file.
2. Follow the steps stated in the installer.
3. Finish the installation.
4. *Restart your computer.
5. Launch muveeNow.
6. Enter product key (with dashes included) as prompted.

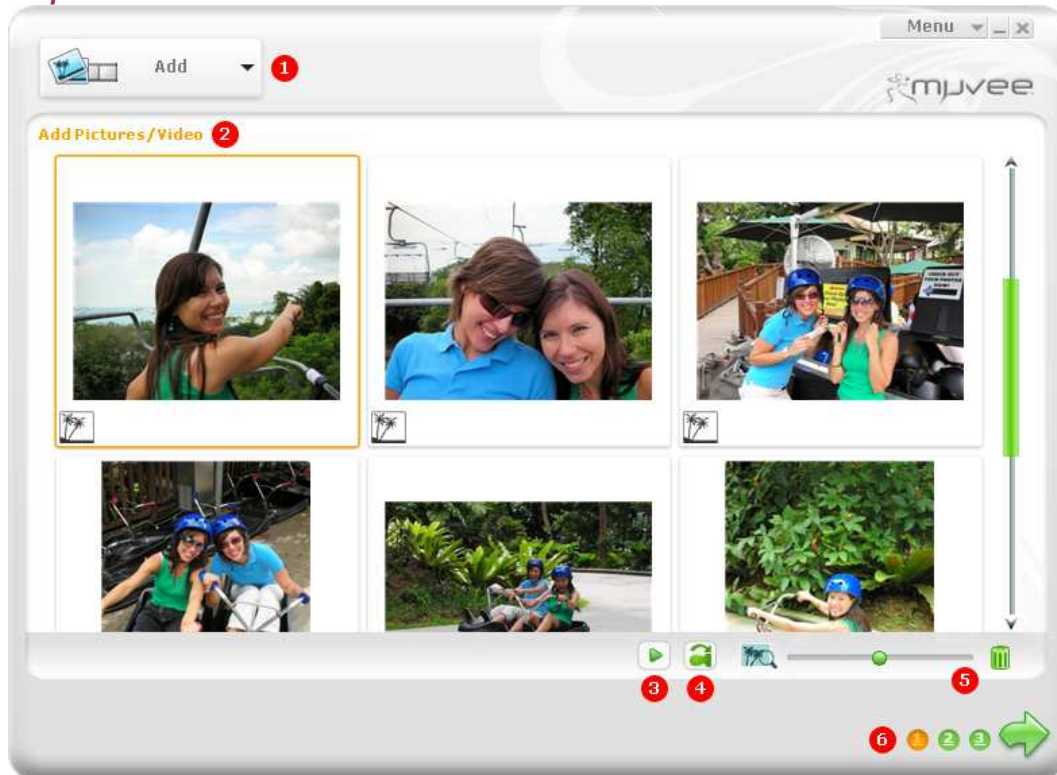
Your product key should look like this (12345-ABCDE-54321-...).

Note:

- a) * Launching muveeNow for the first time before a restart will cause the application to not function properly.
- b) Installing a refresh version of muveeNow (e.g. version 2.0 to version 2.1) does not require a re-entering of product key. To check your version, launch muveeNow → Menu → About.
- c) For installation errors and technical support, please go to www.muvee.com/support.

The interface

Step 1 interface:



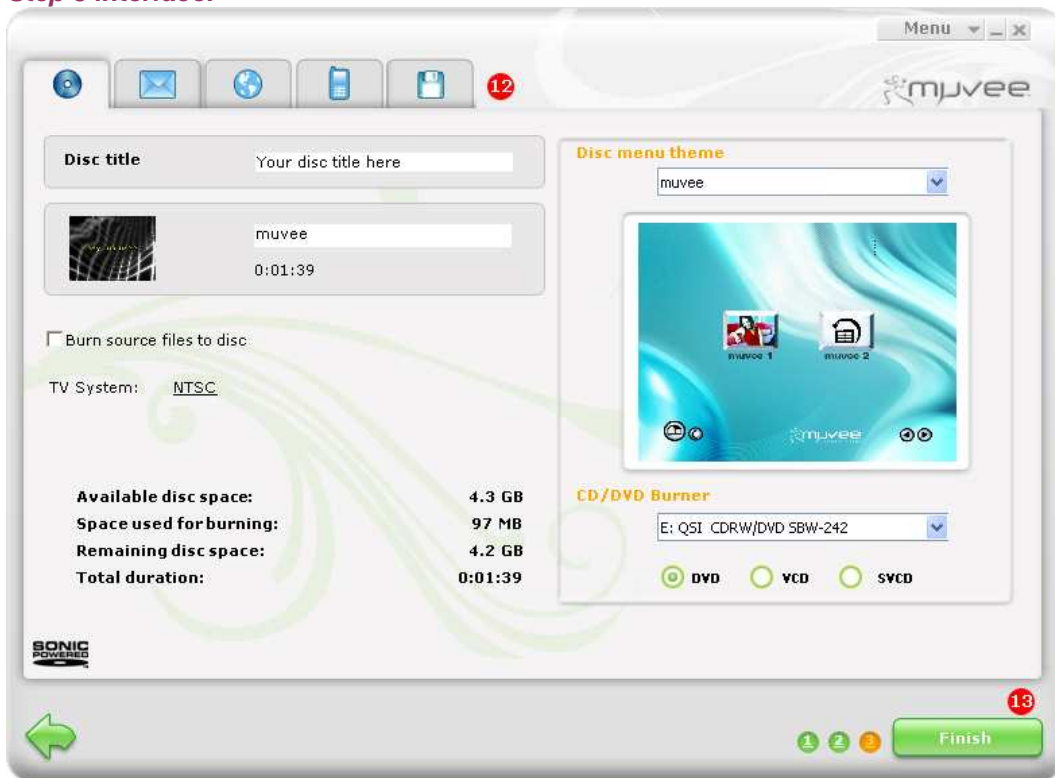
- [1] Media import area: 'Add video', 'Add pictures' and 'Import from video/pictures from a device' buttons
- [2] Media panel
- [3] 'Play video' button
- [4] 'Rotate picture' button
- [5] 'Zoom in/out' slider
- [6] Step progression area: 'Step 1-2-3' and 'Next step' buttons

Step 2 interface:



- [7] 'Add music' button
- [8] 'Select style' panel
- [9] Preview window
- [10] 'make muvee' button
- [11] 'Personalize' button

Step 3 interface:



- [12] 'Saving option' tabs
- [13] 'Finish' button

Step 1

Adding video and pictures

You can add videos and pictures from your computer, or import them directly into muveeNow from a DV camcorder, digital camera or other devices.

1. Click the **'Add'** button.
2. Click **'From My Computer'** to import media from your computer.
3. Click **'From My Camcorder'** or **'From My Camera/Device'** to import media from a DV camcorder, digital camera or other devices respectively.
4. You will see thumbnails of your video and picture files in the media panel after addition.

Note: Connect and power on your device ('Play' mode for camera) to your computer prior to launching.

Video and pictures Tips

- Have the videos and pictures you wish to use for the muvee organized in folders before starting your muveeNow.
- Check **'Auto-correct red-eye'**, **'Auto-enhance'** and **'Auto-remove noise'** options at the bottom of the pop-up window to improve your video and picture quality.
- Double-click any picture to have an enlarged view. Alternatively, use the slider bar at the bottom.
- You can highlight and rotate pictures with **'Rotate'** button at the bottom.
- Always have more video and pictures than the desired length of your final muvee. For example, it is ideal to have at least 3 minutes of video when you are making a 1 minute muvee.

Step 2

Adding music

1. Click the '**Add music**' button.
2. Select music file.

Note: Music files that are protected by Digital Rights Management are generally not supported. However, the music file can be supported if it can be played on Windows Media Player version 7 or later.

Selecting style

Styles are templates for making your muvee. Each style contains its own set of unique traits that determine the way material is selected from your video/pictures, the visual effects and transitions that are used, the pacing of your muvee, and the way the final production is put together.

1. Simply click on a style icon.
2. View style preview in preview window.
3. Click the '**make muvee**' button to make and preview your production.

Style Tips

- Clicking on a style will display a style description and automatically play a short sample for preview.
- You must select a style before you can make a muvee. For simple effects, try using the **Moody** style.
- Use appropriate music with styles. For example, styles with slow effects or transitions work best with slow sentimental music.
- Get more variety in your muvees by clicking on '**Get more styles!**' to purchase and download additional plug-in styles.

Setting muvee duration

By default, the length of each muvee you make will be set to the combined length of the music track(s) you use.

For manual selection:

1. Click the '**Personalize**' button.
2. Under '**Set muvee duration**' column, make selection accordingly.

Note: Pictures and videos may be repeated if music duration is longer than total input and vice versa.

Adding Title/Credits

You can give your muvee a title, end credits and customize the background using pictures.

1. Click the '**Personalize**' button.
2. Go to the '**Title**' or '**Credits**' column.
3. Make the changes accordingly.

Audio Mixer Option

You can choose from hearing only the audio from your selected music tracks to hearing only the sound from your original video footage.

1. Click the '**Personalize**' button.
2. Go to '**Mixer controls**' column.
3. Use the slider to mix the sound from your original video footage with the music added previously.

Audio Mixer Tips

- You can choose to hear only the sound from your original video footage by moving the slider to the extreme right.

Making muvee

When you click '**make muvee**', muveeNow will check to see if your video, pictures and music have been analyzed before. If they have not, muveeNow will first analyze them before creating your muvee.

muveeNow analyzes your video to automatically detect shot boundaries and pick out footage highlights to use in the final production. Your music is also analyzed to determine its tempo and mood.

muvee autoProducer then takes the media you've imported, applies style effects and transitions and intelligently synchronizes everything to the beat of your music to give you a professional-looking production, automatically.

Note: A muvee project is a work-in-progress session that contains the photos, video clips and music that you've added. When you save a project, you can exit muveeNow and subsequently resume your session where you left off by clicking 'Load muvee project' to reload your saved project file. By saving a project, you won't have to start a new session and select your media all over again. By default, muvee projects are saved in the 'My muvees' folder on your PC. Saving a project is not the same as saving a muvee. When you save a muvee, you're actually creating (rendering) the final production.

Step 3

Saving with muveeShare

muveeShare lets you save multiple muvees in a batch and share them via email, web streaming, mobile devices, burning to CD/DVD or computer.

1. Click the '**muveeShare**' button.
2. Select the muvees you want to save in the **muvee list**. (on the left of the window)
3. *Select saving option.

Saving Tips

- Every muvee that you make is retained in the list until you delete it. Keeping these projects allows you to save or burn in the various available formats whenever you need them.
- Selecting multiple muvee projects in your muvee list allows batch saving or batch burning into 1 CD simultaneously.
- Saved muvees cannot be burned to CD/DVD if any of the original muvee files are removed from your computer.

*Note: Saving your muvees may take some time depending on the format that you have chosen. Formats that use video compression (for example WMV-HD and MPEG-2) will take longer to save. Saving in WMV-HD format is not supported on Windows 2000.